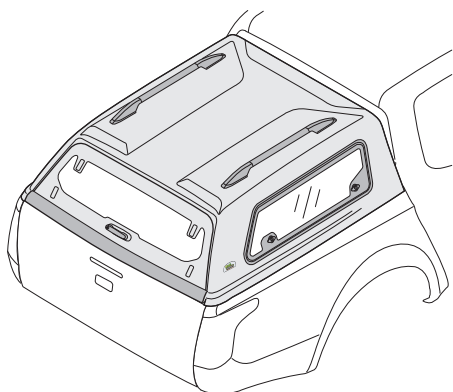




INSTALLATION INSTRUCTIONS MANUAL



Caution for installation

Read this mounting manual carefully, before you start the installation.

1. Area where to install product should be clean.
2. During installation, person who installed should take off any ornaments.

Product name	MAXTOP 3 WITH SIDE LIFT, CENTRAL LOCK
Model name	MITSUBISHI TRITON DBC 2015+
Inst. number	L04-0387

Component parts

	x1	x4	x4	x2	x2
	x8	x8	x8	x2	
x2	x2	x4	x2	x1	x2
					x6

Tools used

No.12,13	No.5	No.12,13		
Silicone/Polyurethane	No.40	Methyl alcohol 100%	Cloth	



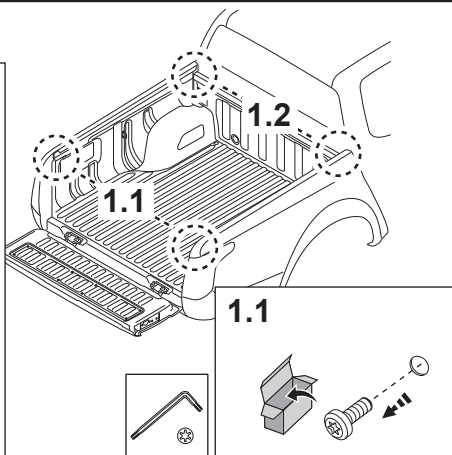
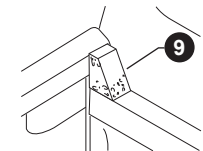
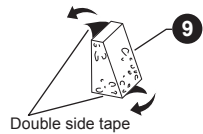
Vandapac Co., Ltd.

700/135 Moo 5, Klongtumru, Muang Chonburi, Chonburi, 20000 Thailand Tel : (038)468-008 Fax : (038)468-006 Email : mail@vandapac.com

— Instruction procedure (without bedliner) —

1

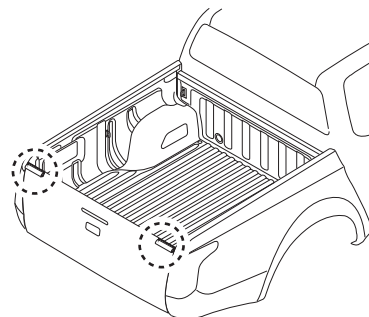
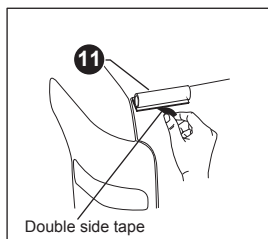
1.2



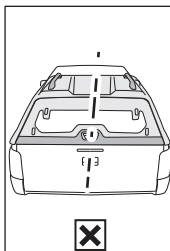
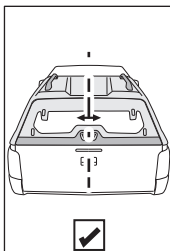
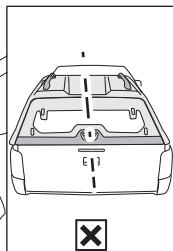
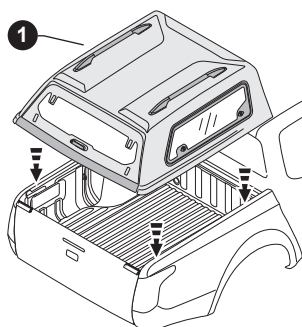
1.1



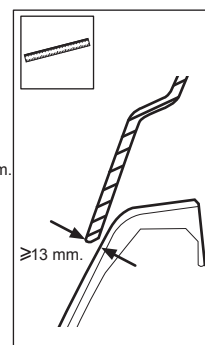
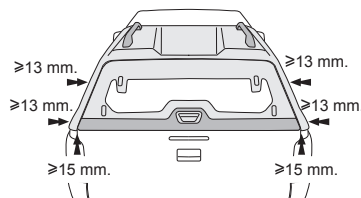
2



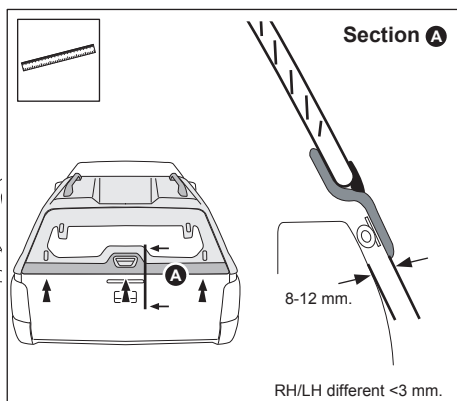
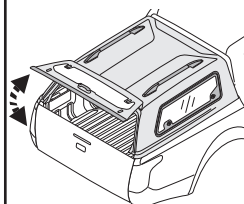
3



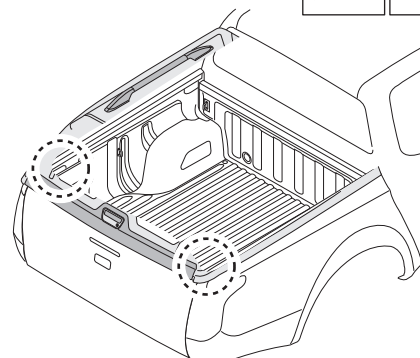
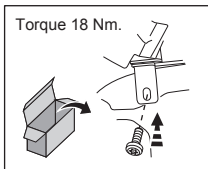
4



5

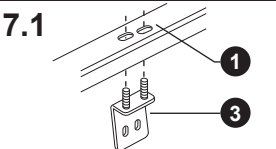


6

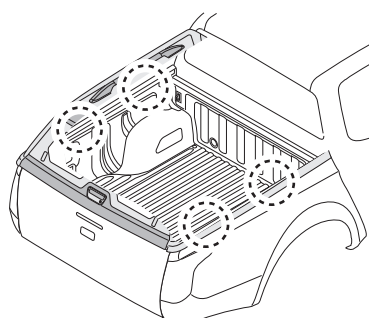
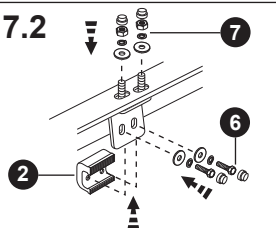


7

7.1



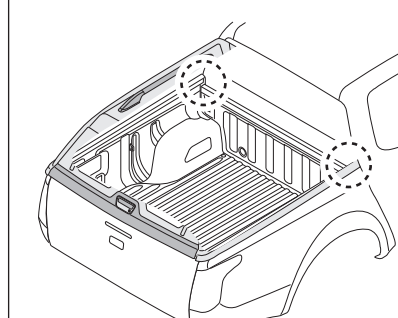
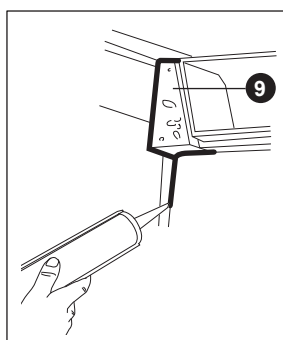
7.2



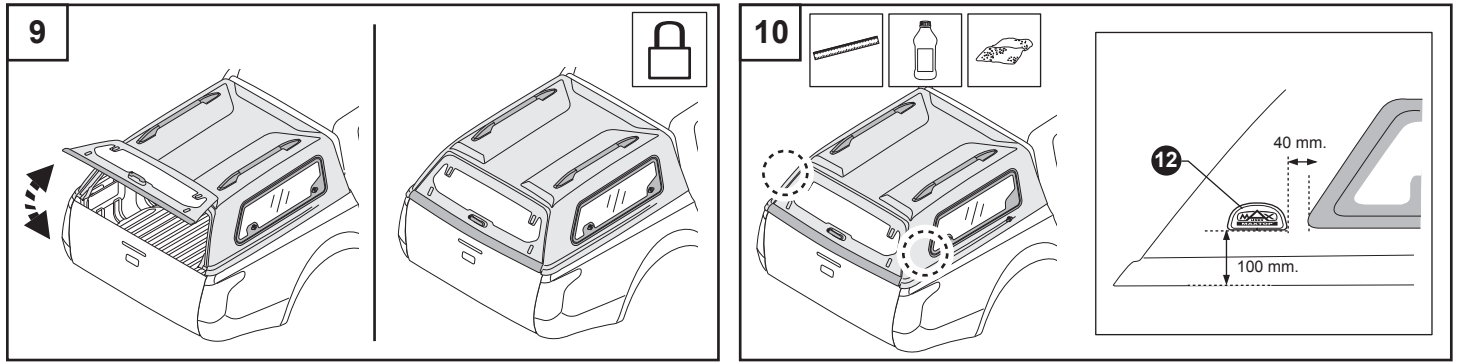
Torque 18 Nm.



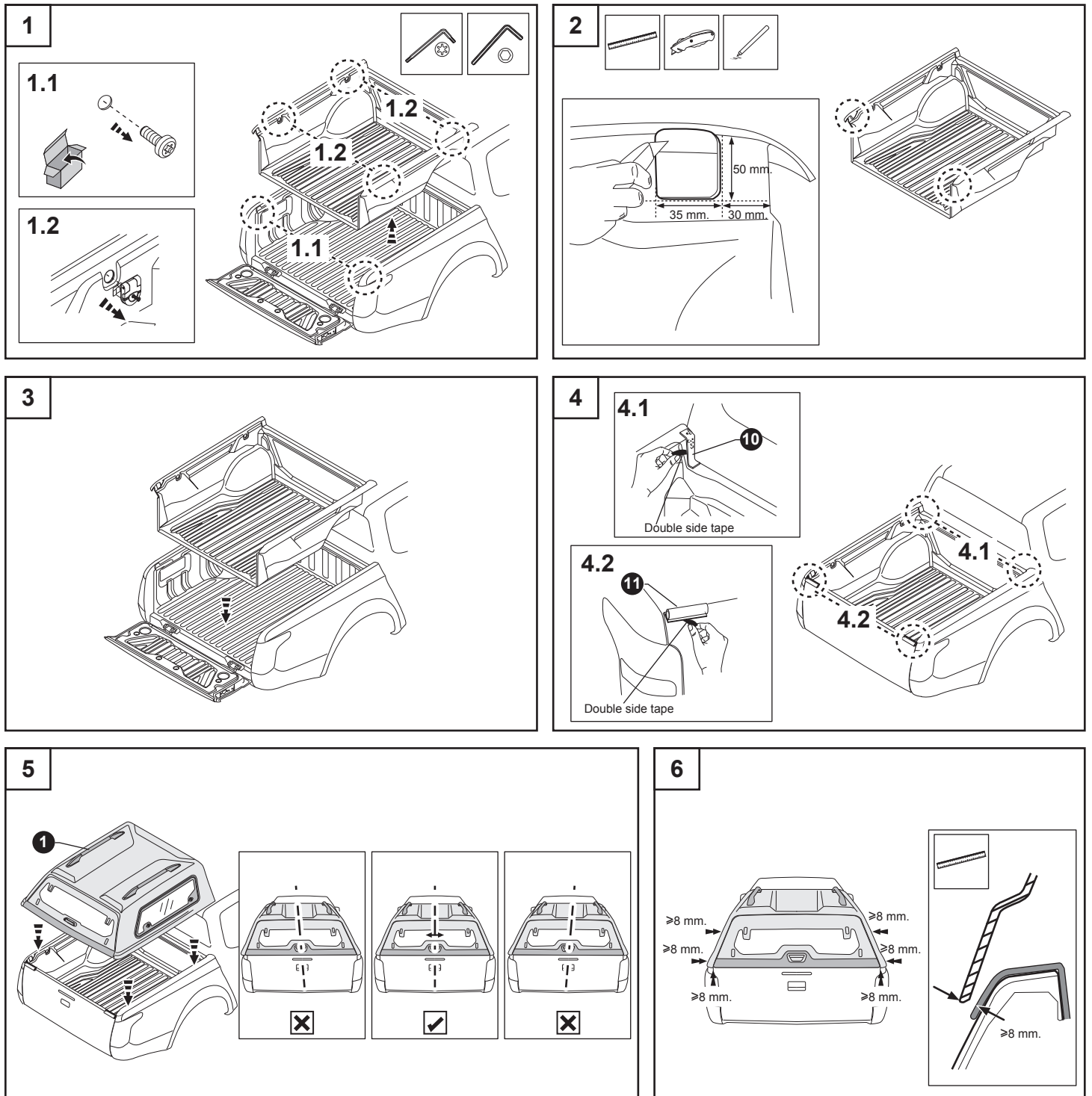
8



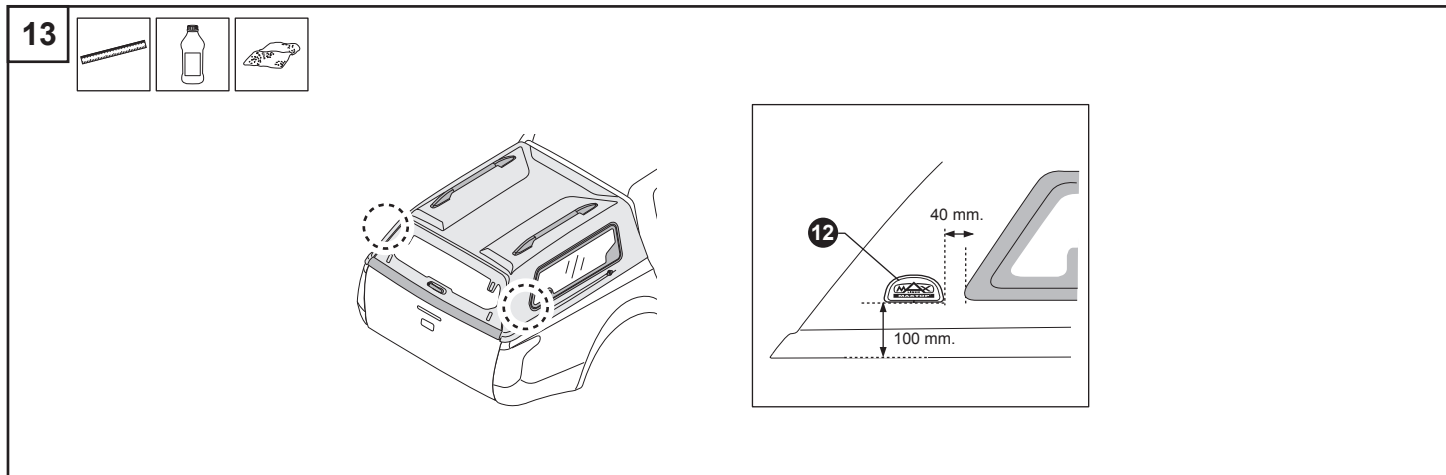
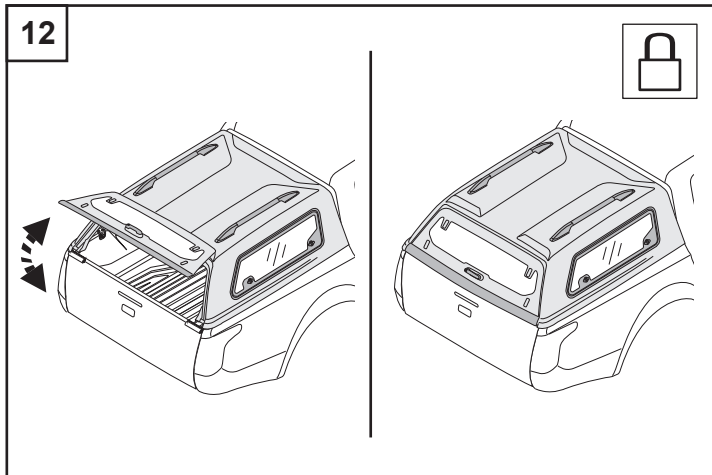
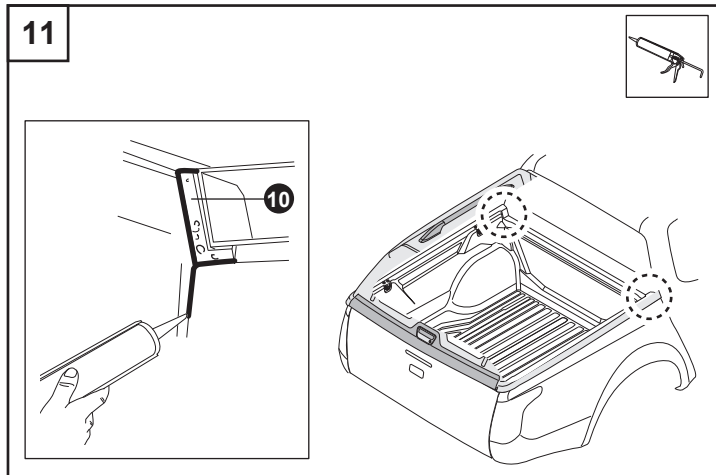
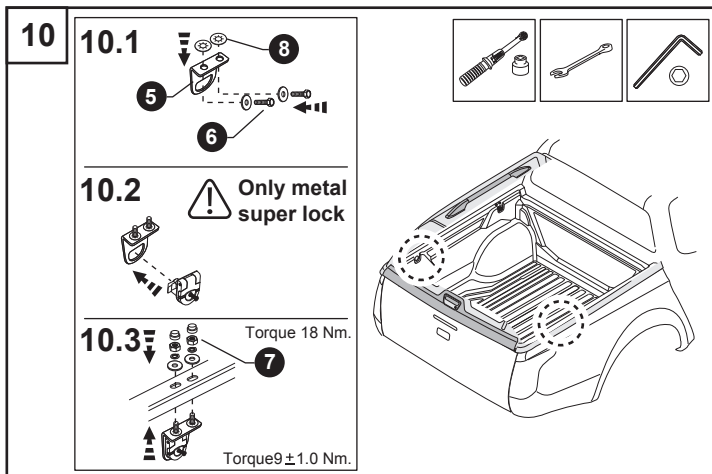
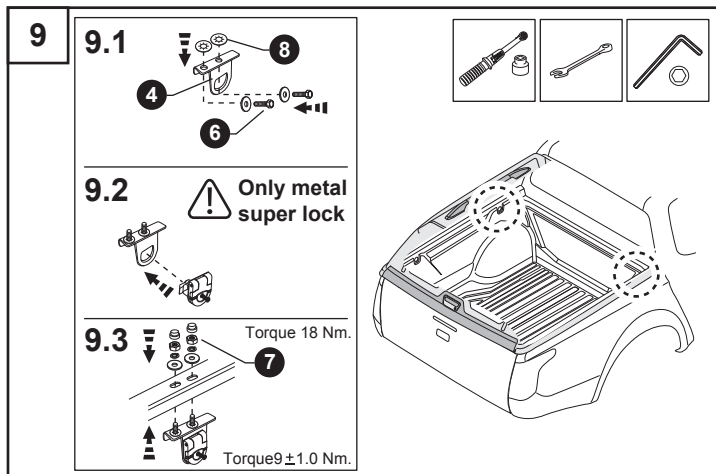
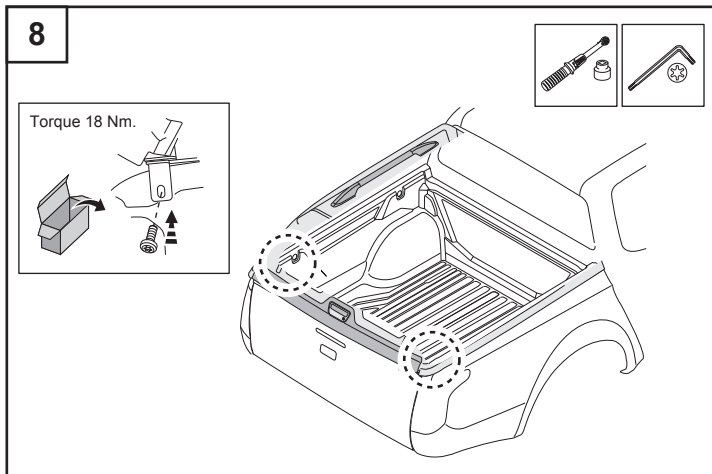
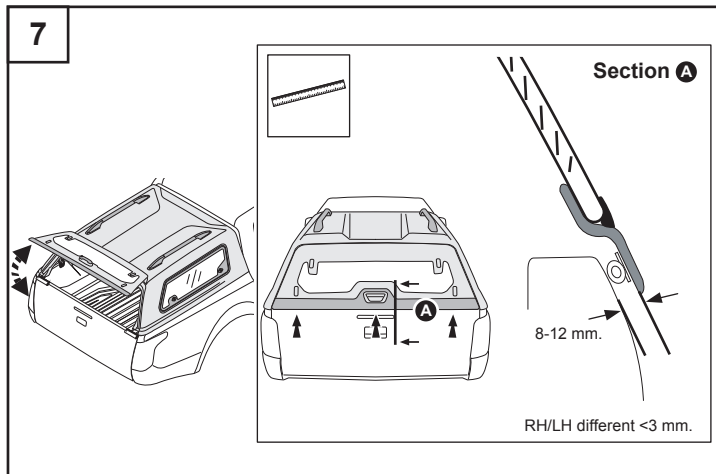
—Instruction procedure (without bedliner)—



—Instruction procedure (with bedliner)—

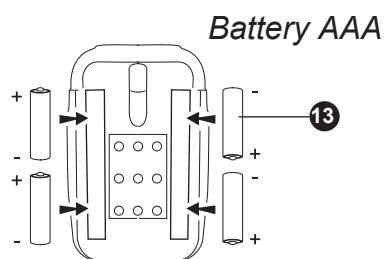
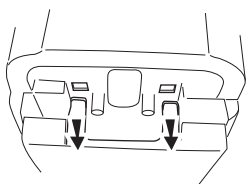
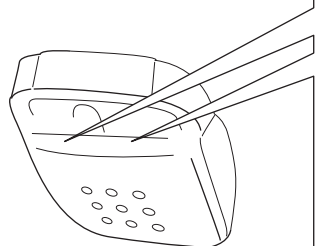


— Instruction procedure (with bedliner) —

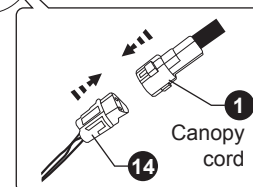
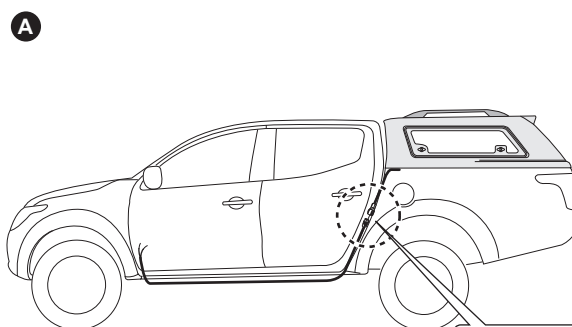
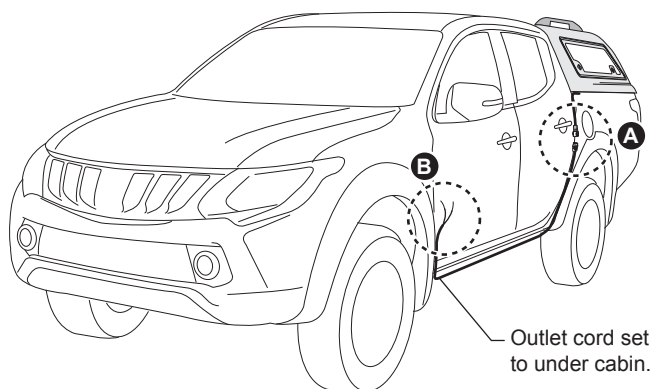


— Instruction procedure (without bedliner) —

NOTE : ROOM LAMP



— Instruction procedure (cord set) —



Outlet cord set to under cabin.

